

## FINAL MINUTES

### Milk Commission Meeting Held December 14, 2016

Minutes of the meeting of the Milk Commission, held at the Virginia Department of Forestry, 900 Natural Resources Drive, Charlottesville, VA.

#### THE COMMISSION:

PRESENT: Gerald Heatwole, Chairperson; Crafton Wilkes, Administrator; Patrick Crawford, Commissioner; Kenneth Smith, Commissioner; Jessica Norwood, Auditor II.

ABSENT: Kate Farmer, Commissioner; John Swanson, Commissioner; Robb Watters, Commissioner; Bruce E. Mayer; Commissioner.

Gerald Heatwole called the meeting to order at 1:40 P.M. Gerald Heatwole asked for a motion to accept the minutes from the previous meeting. Patrick Crawford so moved and Ken Smith seconded the motion. The minutes were accepted as written.

#### **The Administrator:**

The Administrator gave a review of Class I and Class II sales and pricing, as well as retail pricing. There were no questions regarding pricing. The Administrator went on to review Presumed Delivery Cost Percentage, which the Commission is required to consider each December per 2VAC 15-20-100 3 G (2). There was a hearty discussion on the delivered cost, delivery percentage and the variance, including the differences and clarification on the numbers. Gerald Heatwole asked if there was any comment from the Commissioner's present. There was some additional discussion on Class IV pricing and some of the upcoming expectations that are trending in the market. Despite calculations indicating a decrease in delivery percentage was in order, the Administrator recommended to leave the Delivery Cost Percentages unchanged in 2017 because fuel prices are projected to increase at an offsetting rate and the 2016 percentages would be more realistic.

Gerald Heatwole asked for a motion to accept the Presumed Delivery Cost Percentage as outlined in the Delivery Cost per Case Analysis documents that were presented at the meeting. Ken Smith so moved and Patrick Crawford seconded the motion. The Presumed Delivery Cost Percentage was accepted as presented.

<u>Cases per Delivery</u>		<u>2016</u>	<u>Effective 2017</u>
0-13	Platform Cost x	1.4436 (44.36%)	1.4436 (44.36%)
14-99	Platform Cost x	1.2218 (22.18%)	1.2218 (22.18%)
100+	Platform Cost x	1.1199 (11.99%)	1.1199 (11.99%)



Commonwealth of Virginia  
Virginia State Milk Commission  
Crafton O. Wilkes, Administrator  
[www.vdacs.virginia.gov/food-state-milk-commission](http://www.vdacs.virginia.gov/food-state-milk-commission)

102 Governor Street  
Suite 205  
Richmond, VA 23219  
Tel: 804-786-2013  
Fax: 804-371-8700

**Announcement of Producer Class I Price at 3.5% Butterfat**

**December 2016**

	OCT 2016	NOV 2016	DEC 2016
<b>Eastern Market</b>			
Established Price	\$8.46	\$8.46	\$8.46
Add Adjustment (per §2VAC15-20-81)	\$14.24	\$12.42	\$14.52
<b>Eastern Market Class I Price (per cwt)</b>	<b>\$22.70</b>	<b>\$20.88</b>	<b>\$22.98</b>
Eastern Market Skim Price (per cwt)	14.8795	13.8895	15.9395
Eastern Market Butterfat Price (per lb)	2.3833	2.1359	2.1714
<b>Western Market</b>			
Established Price	\$8.16	\$8.16	\$8.16
Add Adjustment (per §2VAC15-20-81)	\$14.34	\$12.52	\$14.62
<b>Western Market Class I Price (per cwt)</b>	<b>\$22.50</b>	<b>\$20.68</b>	<b>\$22.78</b>
Western Market Skim Price (per cwt)	14.6795	13.6895	15.7395
Western Market Butterfat Price (per lb)	2.3813	2.1339	2.1694
<b>Southwestern Market</b>			
Established Price	\$7.96	\$7.96	\$7.96
Add Adjustment (per §2VAC15-20-81)	\$13.77	\$11.94	\$14.05
<b>Southwestern Market Class I Price (per cwt)</b>	<b>\$21.73</b>	<b>\$19.90</b>	<b>\$22.01</b>
Southwestern Market Skim Price (per cwt)	13.9050	12.9150	14.9650
Southwestern Market Butterfat Price (per lb)	2.3736	2.1262	2.1617
<b>Class II Price Announcement Date</b>			
	NOV 2, 2016	NOV 30, 2016	JAN 5, 2017
<b>Milk Commission Class II Price (per cwt)</b>	<b>\$14.09</b>		
Milk Commission Class II Skim Price (per cwt)	\$7.1400	\$7.4700	\$7.3200
Milk Commission Class II Butterfat Price (per lb)	2.0563		
<b>Milk Commission Bi-Monthly Index</b>			
	336.7	331.0	329.2
<b>Milk Commission Assessment Rate (per cwt)</b>			
	0.03950	0.03950	0.03950
<b>Federal Order Base Class I Price (per cwt)</b>			
	\$16.60	\$14.78	\$16.88

**December 2016 Highlights**

**Next Announcement: Dec. 21, 2016**

-The Eastern Market Class I price for December increased over November by \$2.10 per cwt. The skim price increased by \$2.05 per cwt, and the butterfat price increased by \$0.04 per lb.

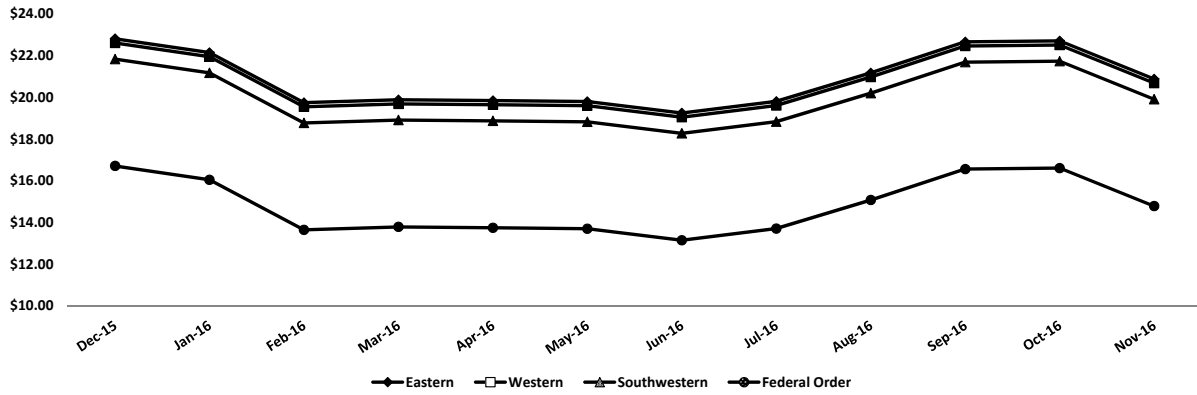
-The Western Market Class I price for December increased over November by \$2.10 per cwt. The skim price increased by \$2.05 per cwt, and the butterfat price increased by \$0.04 per lb.

-The Southwestern Market Class I price for December increased over November by \$2.10 per cwt. The skim price increased by \$2.05 per cwt, and the butterfat price increased by \$0.04 per lb.

Virginia State Milk Commission  
Class I Price Dashboard  
December 2016

Months Plotted: 12

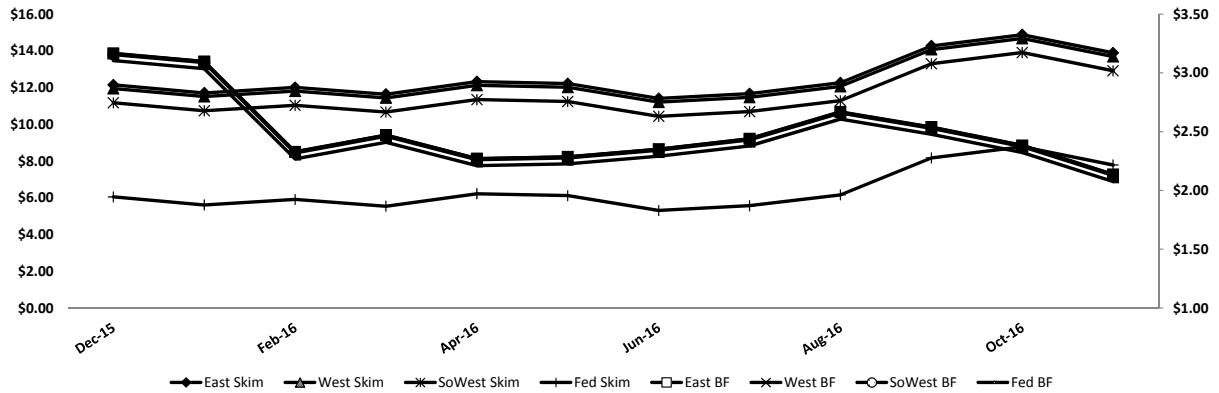
Class I Price by Market



	Class I Price (per cwt)			
	Eastern	Western	Southwestern	Federal Order*
12-Month High	\$22.80	\$22.60	\$21.83	\$16.71
12-Month Low	\$19.24	\$19.04	\$18.27	\$13.14
12-Month Avg.	\$20.89	\$20.69	\$19.91	\$14.79
<b>Current Month</b>	<b>\$22.98</b>	<b>\$22.78</b>	<b>\$22.01</b>	<b>\$16.88</b>

\*The Federal Order Class I Price is a baseline price, and does not factor in location differentials

Class I Component Price by Market

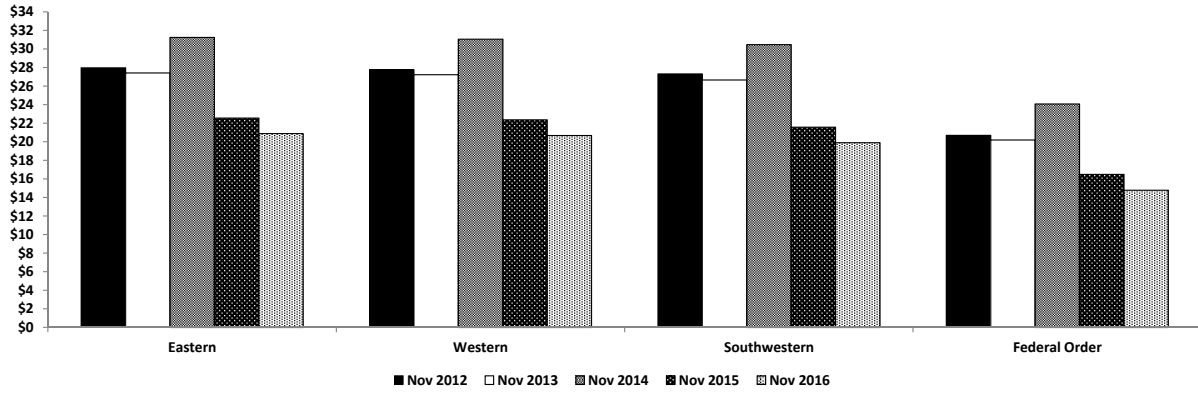


	Class I Component Price							
	Eastern Skim (per cwt)	Eastern Butterfat (per lb)	Western Skim (per cwt)	Western Butterfat (per lb)	Southwestern Skim (per cwt)	Southwestern Butterfat (per lb)	Federal Order Skim (per cwt)	Federal Order Butterfat (per lb)
12-Month High	\$14.8795	\$3.1658	\$14.6795	\$3.1638	\$13.9050	\$3.1561	\$8.7800	\$3.1048
12-Month Low	\$11.4095	\$2.1359	\$11.2095	\$2.1339	\$10.4350	\$2.1262	\$5.3100	\$2.0749
12-Month Avg.	\$12.5353	\$2.5116	\$12.3353	\$2.5096	\$11.5608	\$2.5018	\$6.4358	\$2.4506
<b>Current Month</b>	<b>\$15.9395</b>	<b>\$2.1714</b>	<b>\$15.7395</b>	<b>\$2.1694</b>	<b>\$14.9650</b>	<b>\$2.1617</b>	<b>\$9.8400</b>	<b>\$2.1104</b>

Virginia State Milk Commission  
 Class I Price Dashboard  
 December 2016

Type: Annual

Class I Price Comparison



Class I Price Comparison by Month

	Nov 2012	Nov 2013	Nov 2014	Nov 2015	Nov 2016
Eastern	\$27.96	\$27.42	\$31.24	\$22.56	\$20.88
Western	\$27.76	\$27.22	\$31.04	\$22.36	\$20.68
Southwestern	\$27.31	\$26.65	\$30.47	\$21.57	\$19.90
Federal Order	\$20.70	\$20.20	\$24.06	\$16.48	\$14.78



VIRGINIA DEPARTMENT  
OF AGRICULTURE AND  
CONSUMER SERVICES

Commonwealth of Virginia  
Virginia State Milk Commission  
Crafton O. Wilkes, Administrator  
[www.vdacs.virginia.gov/food-state-milk-commission](http://www.vdacs.virginia.gov/food-state-milk-commission)

102 Governor Street  
Suite 205  
Richmond, VA 23219  
Tel: 804-786-2013  
Fax: 804-371-8700

---

**Announcement of Producer Class II Price at 3.5% Butterfat****November 2016**

---

	SEP 2016	OCT 2016	NOV 2016
<b>State Milk Commission Class II Price (per cwt)</b>	\$14.66	\$14.09	<b>\$14.60</b>
Class II Skim Price (per cwt)	6.7900	7.1400	7.4700
Class II Butterfat Price (per lb)	2.3152	2.0563	2.1114

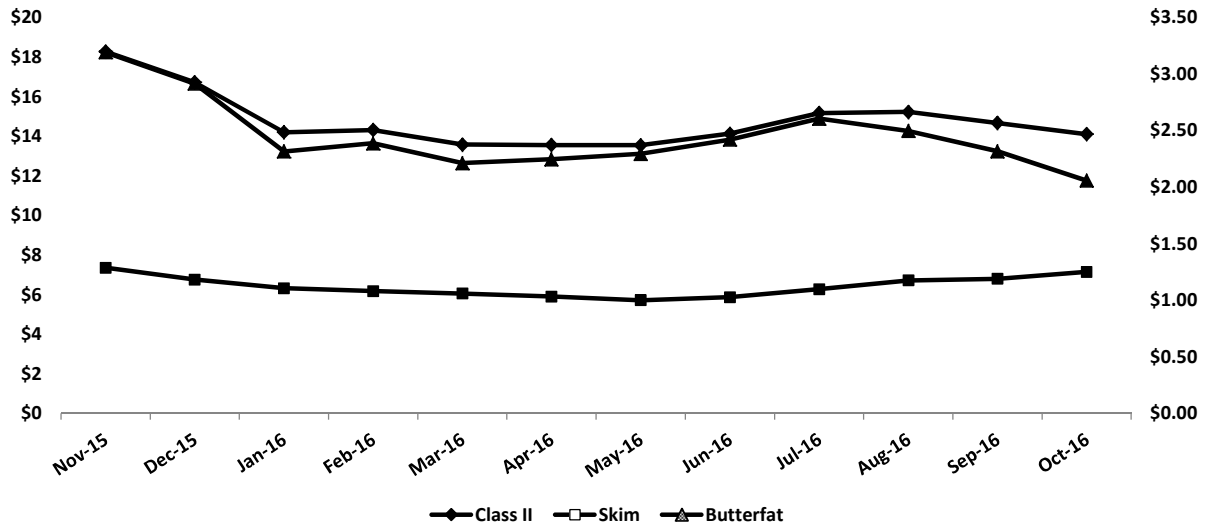
**November 2016 Highlights****Next Announcement: Jan. 5, 2017**

-The Class II price for November increased over October by \$0.51 per cwt. The Class II Skim price increased by \$0.33 per cwt, and the Class II Butterfat price increased by \$0.06 per lb.

Virginia State Milk Commission  
Class II Dashboard  
November 2016

Months Plotted: 12

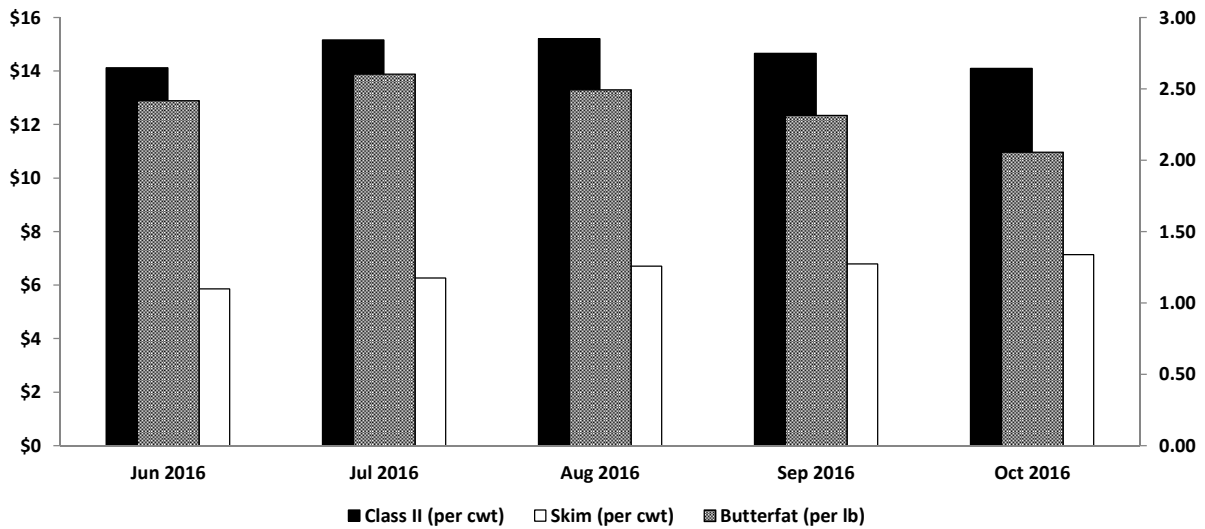
Class II and Component Price



	Class II (per cwt)	Skim (per cwt)	Butterfat (per lb)
12-Month High	\$16.71	\$7.1400	\$2.9127
12-Month Low	\$13.53	\$5.7100	\$2.0563
12-Month Avg.	\$14.46	\$6.3318	\$2.3858
<b>Current Month</b>	<b>\$14.60</b>	<b>\$7.4700</b>	<b>\$2.1114</b>

Comparison: Monthly

Class II Price Comparison



	Jun 2016	Jul 2016	Aug 2016	Sep 2016	Oct 2016
Class II (per cwt)	\$14.12	\$15.16	\$15.21	\$14.66	\$14.09
Skim (per cwt)	\$5.8600	\$6.2700	\$6.7100	\$6.7900	\$7.1400
Butterfat (per lb)	\$2.4179	\$2.6034	\$2.4943	\$2.3152	\$2.0563

**Virginia State Milk Commission  
Delivery Cost per Case Analysis  
2016 - Effective: Jan 1, 2017**

Summary	Year	Total Cases	Private Label	Net Cases	Distribution Expense	Dist. Exp. per Case	Variance (\$)	Variance (%)
	2015	4,608,116	285,213	4,322,903	\$3,723,392	\$0.861317	-\$0.060032	-6.9698%
	2016	4,688,894	274,734	4,414,160	\$3,537,004	\$0.801286		
	Cases per Delivery		2016 Delivery Percentage		2017 Delivery Percentage		Variance (\$)	Variance (%)
	0-13		44.36%		41.27%		-0.0309	-6.97%
14-99		22.18%		20.64%		-0.0155	-6.97%	
100+		11.99%		11.16%		-0.0084	-6.97%	

Eastern Market	Cases per Delivery	Product	Nov 16 Platform Cost	2016 Delivered Cost/Unit	2017 Delivered Cost/Unit	Variance (\$)
	0-13	HVD Gallon	\$2.382	\$3.439	\$3.365	-\$0.074
		2% Gallon	\$2.155	\$3.111	\$3.045	-\$0.067
		1% Gallon	\$1.982	\$2.861	\$2.800	-\$0.061
		Skim Gallon	\$1.880	\$2.715	\$2.656	-\$0.058
	14-99	HVD Gallon	\$2.382	\$2.911	\$2.874	-\$0.037
		2% Gallon	\$2.155	\$2.633	\$2.600	-\$0.033
		1% Gallon	\$1.982	\$2.422	\$2.391	-\$0.031
		Skim Gallon	\$1.880	\$2.298	\$2.268	-\$0.029
	100+	HVD Gallon	\$2.382	\$2.668	\$2.648	-\$0.020
		2% Gallon	\$2.155	\$2.414	\$2.396	-\$0.018
		1% Gallon	\$1.982	\$2.220	\$2.203	-\$0.017
		Skim Gallon	\$1.880	\$2.106	\$2.090	-\$0.016

Western Market	Cases per Delivery	Product	Nov 16 Platform Cost	2016 Delivered Cost/Unit	2017 Delivered Cost/Unit	Variance (\$)
	0-13	HVD Gallon	\$2.365	\$3.414	\$3.341	-\$0.073
		2% Gallon	\$2.138	\$3.087	\$3.021	-\$0.066
		1% Gallon	\$1.965	\$2.837	\$2.776	-\$0.061
		Skim Gallon	\$1.863	\$2.690	\$2.632	-\$0.058
	14-99	HVD Gallon	\$2.365	\$2.890	\$2.853	-\$0.037
		2% Gallon	\$2.138	\$2.612	\$2.579	-\$0.033
		1% Gallon	\$1.965	\$2.401	\$2.370	-\$0.030
		Skim Gallon	\$1.863	\$2.276	\$2.248	-\$0.029
	100+	HVD Gallon	\$2.365	\$2.649	\$2.629	-\$0.020
		2% Gallon	\$2.138	\$2.395	\$2.377	-\$0.018
		1% Gallon	\$1.965	\$2.201	\$2.184	-\$0.016
		Skim Gallon	\$1.863	\$2.087	\$2.071	-\$0.016

Southwestern Market	Cases per Delivery	Product	Nov 16 Platform Cost	2016 Delivered Cost/Unit	2017 Delivered Cost/Unit	Variance (\$)
	0-13	HVD Gallon	\$2.298	\$3.318	\$3.247	-\$0.071
		2% Gallon	\$2.071	\$2.990	\$2.926	-\$0.064
		1% Gallon	\$1.898	\$2.740	\$2.682	-\$0.059
		Skim Gallon	\$1.796	\$2.593	\$2.538	-\$0.056
	14-99	HVD Gallon	\$2.298	\$2.808	\$2.773	-\$0.036
		2% Gallon	\$2.071	\$2.531	\$2.499	-\$0.032
		1% Gallon	\$1.898	\$2.319	\$2.290	-\$0.029
		Skim Gallon	\$1.796	\$2.195	\$2.167	-\$0.028
	100+	HVD Gallon	\$2.298	\$2.574	\$2.555	-\$0.019
		2% Gallon	\$2.071	\$2.320	\$2.302	-\$0.017
		1% Gallon	\$1.898	\$2.126	\$2.110	-\$0.016
		Skim Gallon	\$1.796	\$2.012	\$1.997	-\$0.015

Virginia State Milk Commission  
Base Assignment System  
October 2016

Established 9-month Base	DFA SE	DFA NE	MDVA	CMPA	Land O'Lakes	Cumberland Valley	Mt. Joy	DFA ME	Established Base Total
	29,954,661	492,555	25,594,009	14,836,770	854,220	266,629	251,513	13,022	72,263,379

Order	Distributor	DFA SE	DFA NE	MDVA	CMPA	Land O'Lakes	Cumberland Valley	Mt. Joy	DFA ME	Total Base Assignment
5	Borden Dairy KY			602,492						602,492
33	Broughton Foods	201,705								201,705
1	Cloverland Farms Dairy			2,297,988			271,494			2,569,483
1	Crowley Foods	613,723								613,723
1	Cumberland Dairy					218,285				218,285
5	Dairy Fresh	2,774,379		437,916	2,648,241					5,860,536
5	Harris Teeter				955,441					955,441
5	Homestead Creamery				408,518					408,518
1	HP Hood			1,652,698		147,885				1,800,583
5	Land-O-Sun Spartanburg			380,134						380,134
1	Marva Maid Landover			477,151						477,151
VA	Marva Maid Newport News	1,079,984		6,479,907	3,239,953					10,799,845
5	Mayfield			1,252,882						1,252,882
5	Milkco			1,940,382						1,940,382
33	Nestle	388,720								388,720
5	PET Richmond	7,778,798		5,324,536	7,855,361					20,958,694
VA	Potomac Farms			368,126						368,126
7	Saputo Dairy KY	373,596								373,596
1	Saputo Foods NY	485,096								485,096
33	Superior Dairy	2,878,284								2,878,284
1	Swiss Premium Dairy			2,632,373						2,632,373
1	Tuscan Lehigh Dairies		501,543			503,638		256,103		1,261,284
33	United Dairy	6,303,571								6,303,571
1	Upstate Niagara			477,195						477,195
1	Wawa Dairy			460,631						460,631
5	Westover Dairy	7,579,900								7,579,900
VA	White Wave Mt. Crawford			1,276,642						1,276,642
5	Winchester Farms	43,523							13,260	56,783
<b>TOTAL</b>		<b>30,501,279</b>	<b>501,543</b>	<b>26,061,053</b>	<b>15,107,514</b>	<b>869,808</b>	<b>271,494</b>	<b>256,103</b>	<b>13,260</b>	<b>73,582,054</b>

<b>9-month Base Minus Total</b>										<b>(0)</b>
---------------------------------	--	--	--	--	--	--	--	--	--	------------



**Virginia State Milk Commission  
Base Assignment System  
October 2016**

Virginia Base				
Base Assignable to Virginia Plants:	12,444,613	Percentage of Base Assignable to Virginia Plants:		17.554569%
	<b>DFA</b>	<b>MDVA</b>	<b>CMPA</b>	<b>TOTAL</b>
Assignable Base:	30,460,238	25,594,009	14,836,770	70,891,017
Virginia Plant Base Assignment:	5,347,164	4,492,918	2,604,531	12,444,613
<b>Virginia Plants</b>	<b>DFA</b>	<b>MDVA</b>	<b>CMPA</b>	
Marva Maid Newport News:	5,347,164	2,848,150	2,604,531	10,799,845
Potomac Farms		368,126		368,126
White Wave Mt. Crawford		1,276,642		1,276,642
<b>Total</b>	5,347,164	4,492,918	2,604,531	12,444,613

	<b>DFA</b>	<b>MDVA</b>	<b>CMPA</b>	<b>Land O'Lakes</b>	<b>Cumberland Valley</b>	<b>Mt. Joy</b>
Base Assigned to Virginia Plants:	1,079,984	8,124,675	3,239,953			
Percent of Total Base Assigned to Virginia Plants (%):	<b>3.48%</b>	<b>31.18%</b>	<b>21.45%</b>			
Base Assigned to Fully Regulated Federal Order Plants:	29,936,097	17,936,378	11,867,561	869,808	271,494	256,103
Percent of Total Base Assigned to Federal Order Plants (%):	<b>96.52%</b>	<b>68.82%</b>	<b>78.55%</b>	<b>100.00%</b>	<b>100.00%</b>	<b>100.00%</b>
Total Base Assigned:	31,016,082	26,061,053	15,107,514	869,808	271,494	256,103
Assigned Base (From Base worksheet):	31,016,082	26,061,053	15,107,514	869,808	271,494	256,103
Variance (Total Base Assigned - Assigned Base):			0			
Base Assigned to Federal Order 1 (%):	5.16%	30.69%		100.00%	100.00%	100.00%
Base Assigned to Federal Order 5 (%):	58.65%	38.13%	78.55%			
Base Assigned to Federal Order 7 (%):	1.20%					
Base Assigned to Federal Order 33 (%):	31.51%					
Total Base Assigned to Federal Order Plants (%):	<b>96.52%</b>	<b>68.82%</b>	<b>78.55%</b>	<b>100.00%</b>	<b>100.00%</b>	<b>100.00%</b>

**Virginia State Milk Commission  
 Producer Base Transfers  
 For Commission Approval: December 14, 2016**

The Administrator read and considered the following producer base transfer requests and made the required corrections to monthly processor base assignments:

Date Received	Effective Date	Cooperative	Consigned	Action	Transfer Number	Producer Name	License Number	Previous Base		Adjusted Base	
								9-Month	3-Month	9-Month	3-Month
September 21, 2016	October 1, 2016	MDVA	Yes	Cancel	--	French Orrin L, William D, Martin S & Timothy F; T/A French Brothers Dairy	002230	11,112	10,445	0	0
September 21, 2016	October 1, 2016	MDVA	Yes	Increase	--	Wingert SL/J A-Wingert Bros.	004688	47,459	44,612	58,571	55,057

Virginia State Milk Commission  
Base Assignment System  
November 2016

Established 9-month Base	DFA SE	DFA NE	MDVA	CMPA	Land O'Lakes	Cumberland Valley	Mt. Joy	DFA ME	Established Base Total
	29,954,661	492,555	25,594,009	14,836,770	854,220	266,629	251,513	13,022	72,263,379

Order	Distributor	DFA SE	DFA NE	MDVA	CMPA	Land O'Lakes	Cumberland Valley	Mt. Joy	DFA ME	Total Base Assignment
5	Borden Dairy KY			606,064						606,064
33	Broughton Foods	187,779								187,779
1	Cloverland Farms Dairy			2,165,796			262,737			2,428,533
1	Crowley Foods	612,828								612,828
1	Cumberland Dairy					190,103				190,103
5	Dairy Fresh	2,849,583		449,787	2,720,026					6,019,396
5	Harris Teeter				929,884					929,884
5	Homestead Creamery				443,808					443,808
1	HP Hood			1,798,330		141,020				1,939,350
5	Land-O-Sun Spartanburg			391,578						391,578
1	Marva Maid Landover			467,662						467,662
VA	Marva Maid Newport News	1,043,083		6,258,496	3,129,248					10,430,826
5	Mayfield			868,735						868,735
5	Milkco			1,938,927						1,938,927
33	Nestle	442,626								442,626
5	PET Richmond	7,139,326		5,649,279	7,397,209					20,185,814
VA	Potomac Farms			403,917						403,917
7	Saputo Dairy KY	314,058								314,058
1	Saputo Foods NY	460,607								460,607
33	Superior Dairy	2,857,886								2,857,886
1	Swiss Premium Dairy			1,758,612						1,758,612
1	Tuscan Lehigh Dairies		485,364	471,868				247,841		1,205,074
33	United Dairy	6,164,751								6,164,751
1	Upstate Niagara			401,353						401,353
1	Wawa Dairy			436,947						436,947
5	Westover Dairy	7,404,141								7,404,141
VA	White Wave Mt. Crawford			1,153,024						1,153,024
5	Winchester Farms	40,700							12,832	53,532
1	Dutch Valley Foods					510,627				510,627
<b>TOTAL</b>		<b>29,517,367</b>	<b>485,364</b>	<b>25,220,374</b>	<b>14,620,175</b>	<b>841,750</b>	<b>262,737</b>	<b>247,841</b>	<b>12,832</b>	<b>71,208,439</b>

<b>9-month Base Minus Total</b>			<b>(0)</b>	<b>(0)</b>						<b>(0)</b>
---------------------------------	--	--	------------	------------	--	--	--	--	--	------------

**Virginia State Milk Commission  
Base Assignment System  
November 2016**

Virginia Base				
Base Assignable to Virginia Plants:	11,987,767	Percentage of Base Assignable to Virginia Plants:		16.910136%
	<b>DFA</b>	<b>MDVA</b>	<b>CMPA</b>	<b>TOTAL</b>
Assignable Base:	30,460,238	25,594,009	14,836,770	70,891,017
Virginia Plant Base Assignment:	5,150,868	4,327,982	2,508,918	11,987,767
<b>Virginia Plants</b>	<b>DFA</b>	<b>MDVA</b>	<b>CMPA</b>	
Marva Maid Newport News:	5,150,868	2,771,040	2,508,918	10,430,826
Potomac Farms		403,917		403,917
White Wave Mt. Crawford		1,153,024		1,153,024
<b>Total</b>	5,150,868	4,327,982	2,508,918	11,987,767

	<b>DFA</b>	<b>MDVA</b>	<b>CMPA</b>	<b>Land O'Lakes</b>	<b>Cumberland Valley</b>	<b>Mt. Joy</b>
Base Assigned to Virginia Plants:	1,043,083	7,815,437	3,129,248			
Percent of Total Base Assigned to Virginia Plants (%):	<b>3.48%</b>	<b>30.99%</b>	<b>21.40%</b>			
Base Assigned to Fully Regulated Federal Order Plants:	28,972,480	17,404,937	11,490,927	841,750	262,737	247,841
Percent of Total Base Assigned to Federal Order Plants (%):	<b>96.52%</b>	<b>69.01%</b>	<b>78.60%</b>	<b>100.00%</b>	<b>100.00%</b>	<b>100.00%</b>
Total Base Assigned:	30,015,563	25,220,374	14,620,175	841,750	262,737	247,841
Assigned Base (From Base worksheet):	30,015,563	25,220,374	14,620,175	841,750	262,737	247,841
Variance (Total Base Assigned - Assigned Base):						
Base Assigned to Federal Order 1 (%):	5.19%	29.74%		100.00%	100.00%	100.00%
Base Assigned to Federal Order 5 (%):	58.13%	39.27%	78.60%			
Base Assigned to Federal Order 7 (%):	1.05%					
Base Assigned to Federal Order 33 (%):	32.16%					
Total Base Assigned to Federal Order Plants (%):	<b>96.52%</b>	<b>69.01%</b>	<b>78.60%</b>	<b>100.00%</b>	<b>100.00%</b>	<b>100.00%</b>

Virginia State Milk Commission  
 Producer Base Transfers  
 For Commission Approval: December 14, 2016

The Administrator read and considered the following producer base transfer requests and made the required corrections to monthly processor base assignments:

Date Received	Effective Date	Cooperative	Consigned	Action	Transfer Number	Producer Name	License Number	Previous Base		Adjusted Base	
								9-Month	3-Month	9-Month	3-Month
October 5, 2016	November 1, 2016	MDVA	Yes	Cancel	--	Hartung Kathy J, Robert C. Jr, and TM T/A Rohart Farms	003813	27,704	26,042	0	0
October 5, 2016	November 1, 2016	MDVA	Yes	Increase	--	Garman Elvin N/Esther S	004704	27,704	26,042	55,408	52,084
October 10, 2016	November 1, 2016	MDVA	Yes	Cancel	--	Diller J Norman /Donna J	004268	43,511	40,900	0	0
October 10, 2016	November 1, 2016	MDVA	Yes	Issue	--	Ervin J Diller	005279	0	0	43,511	40,900
October 10, 2016	November 1, 2016	MDVA	Yes	Cancel	--	Hess Elisabeth/William	004094	33,808	31,780	0	0
October 10, 2016	November 1, 2016	MDVA	Yes	Issue	--	Levi H Hess	005280	0	0	33,808	31,780
October 31, 2016	November 1, 2016	CMPA	Yes	Total Transfer	1102	Rutrough Robert L & Freda D	005246	244,798	230,110	0	0
October 31, 2016	November 1, 2016	CMPA	Yes	Increase	1102	Evergreen Ridge Dairy LLC	004717	565,977	532,019	765,307	719,389
October 31, 2016	November 1, 2016	CMPA	Yes	Issue	1102	Jared Rutrough	005281	0	0	45,468	42,740

Virginia State Milk Commission  
Base Assignment System  
December 2016

Established 9-month Base	DFA SE	DFA NE	MDVA	CMPPA	Land O'Lakes	Cumberland Valley	Mt. Joy	DFA ME	Established Base Total
	29,954,661	492,555	25,594,009	14,836,770	854,220	266,629	251,513	13,022	72,263,379

Order	Distributor	DFA SE	DFA NE	MDVA	CMPPA	Land O'Lakes	Cumberland Valley	Mt. Joy	DFA ME	Total Base Assignment
5	Borden Dairy KY			528,233						528,233
33	Broughton Foods	169,514								169,514
1	Cloverland Farms Dairy			2,630,009			271,494			2,901,504
1	Crowley Foods	629,190								629,190
1	Cumberland Dairy					193,752				193,752
5	Dairy Fresh	2,863,441		451,974	2,733,254					6,048,669
5	Harris Teeter				983,481					983,481
5	Homestead Creamery				410,682					410,682
1	HP Hood			2,131,695		43,016				2,174,711
5	Land-O-Sun Spartanburg			398,126						398,126
1	Marva Maid Landover			536,844						536,844
VA	Marva Maid Newport News	1,051,459		6,308,756	3,154,378					10,514,593
5	Mayfield			914,734						914,734
5	Milkco			2,043,523						2,043,523
33	Nestle	421,864								421,864
5	PET Richmond	7,142,461		5,544,885	7,825,719					20,513,066
VA	Potomac Farms			374,299						374,299
7	Saputo Dairy KY	397,271								397,271
1	Saputo Foods NY	484,502								484,502
33	Superior Dairy	3,050,487								3,050,487
1	Swiss Premium Dairy			1,579,781						1,579,781
1	Tuscan Lehigh Dairies		501,543	515,991				256,103		1,273,637
33	United Dairy	6,403,816								6,403,816
1	Upstate Niagara			415,377						415,377
1	Wawa Dairy			469,592						469,592
5	Westover Dairy	7,846,957								7,846,957
VA	White Wave Mt. Crawford			1,217,234						1,217,234
5	Winchester Farms	40,316							13,260	53,576
1	Dutch Valley Foods					633,041				633,041
<b>TOTAL</b>		<b>30,501,279</b>	<b>501,543</b>	<b>26,061,053</b>	<b>15,107,514</b>	<b>869,808</b>	<b>271,494</b>	<b>256,103</b>	<b>13,260</b>	<b>73,582,054</b>

<b>9-month Base Minus Total</b>	<b>0</b>	<b>(0)</b>
---------------------------------	----------	------------

**Virginia State Milk Commission  
Base Assignment System  
December 2016**

Virginia Base				
Base Assignable to Virginia Plants:	12,106,127	Percentage of Base Assignable to Virginia Plants:		17.077096%
	DFA	MDVA	CMPA	TOTAL
Assignable Base:	30,460,238	25,594,009	14,836,770	70,891,017
Virginia Plant Base Assignment:	5,201,724	4,370,713	2,533,689	12,106,127
<b>Virginia Plants</b>	<b>DFA</b>	<b>MDVA</b>	<b>CMPA</b>	
Marva Maid Newport News:	5,201,724	2,779,180	2,533,689	10,514,593
Potomac Farms		374,299		374,299
White Wave Mt. Crawford		1,217,234		1,217,234
<b>Total</b>	<b>5,201,724</b>	<b>4,370,713</b>	<b>2,533,689</b>	<b>12,106,127</b>

	DFA	MDVA	CMPA	Land O'Lakes	Cumberland Valley	Mt. Joy	
Base Assigned to Virginia Plants:	1,051,459	7,900,290	3,154,378				
Percent of Total Base Assigned to Virginia Plants (%):	<b>3.39%</b>	<b>30.31%</b>	<b>20.88%</b>				
Base Assigned to Fully Regulated Federal Order Plants:	29,964,622	18,160,763	11,953,136	869,808	271,494	256,103	
Percent of Total Base Assigned to Federal Order Plants (%):	<b>96.61%</b>	<b>69.69%</b>	<b>79.12%</b>	<b>100.00%</b>	<b>100.00%</b>	<b>100.00%</b>	
Total Base Assigned:	31,016,082	26,061,053	15,107,514	869,808	271,494	256,103	
Assigned Base (From Base worksheet):	31,016,082	26,061,053	15,107,514	869,808	271,494	256,103	
Variance (Total Base Assigned - Assigned Base):		0	0				
Base Assigned to Federal Order 1 (%):	5.21%	31.77%		100.00%	100.00%	100.00%	
Base Assigned to Federal Order 5 (%):	57.73%	37.92%	79.12%				
Base Assigned to Federal Order 7 (%):	1.28%						
Base Assigned to Federal Order 33 (%):	32.39%						
Total Base Assigned to Federal Order Plants (%):	<b>96.61%</b>	<b>69.69%</b>	<b>79.12%</b>	<b>100.00%</b>	<b>100.00%</b>	<b>100.00%</b>	

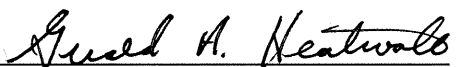
**Virginia State Milk Commission  
 Producer Base Transfers  
 For Commission Approval: December 14, 2016**

The Administrator read and considered the following producer base transfer requests and made the required corrections to monthly processor base assignments:

Date Received	Effective Date	Cooperative	Consiged	Action	Transfer Number	Producer Name	License Number	Previous Base		Adjusted Base	
								9-Month	3-Month	9-Month	3-Month
November 17, 2016	December 1, 2016	CMPA	No	Total Transfer	1202	Bailey J E Sr & Son	000056	20,000	18,800	0	0
November 17, 2016	December 1, 2016	CMPA	Yes	Increase	1202	Koon Robert W Jr & Donna L, T/A Edge-Wood Dairy Farm	005065	112,005	105,284	132,005	124,084
November 18, 2016	December 1, 2016	CMPA	Yes	Partial Transfer	1203	Evergreen Ridge Dairy LLC	004717	765,307	719,389	750,307	705,289
November 18, 2016	December 1, 2016	CMPA	Yes	Issue	1203	David M. Maxey, Jr. T/A Mountain View Dairy	005282	0	0	15,000	14,100
November 23, 2016	December 1, 2016	CMPA	Yes	Partial Transfer	1204	Adkins Thomas &/OR Andrea T/A A+ Cattle	005114	127,500	119,850	115,000	108,100
November 23, 2016	December 1, 2016	CMPA	No	Increase	1204	Hopkins HL CH C-HoHa Dairy	003464	299,274	281,318	311,774	293,068



Gerald Heatwole asked if there was any comment from the public present. There was no public comment. The next Commission meeting is February 15, 2017 at the Virginia Department of Forestry, 900 Natural Resources Drive, Charlottesville, Virginia 22903.

  
Chairperson

  
Administrator